

## 農居

## FARM STAY

體驗休閒，漫步台灣

蟲鳴鳥叫，星空點點，歡迎各國好友，大駕光臨.....

The sounds of nature insects singing and birds chirping and the starry skies are yours to enjoy.

We cordially welcome visitors and friends from all over the world.

## 農居

## FARM STAY

一開窗，清新無塵的空氣迎面而來，大自然形成的四季窗景，時時日日更換。

The sounds of nature insects singing and birds chirping and the starry skies are yours to enjoy.  
We cordially welcome visitors and friends from all over the world.



# 農 居

F A R M   S T A Y

「 閒步綠草地，夜宿山林間，窮盡人間色，流年就此過 」

台灣休閒農場及坐落於休閒農業區的住宿房間不多，大多在百間以內，  
設計風格各有不同，皆具濃濃休閒渡假風味，建築物不高，視野遼闊，房間寬敞潔淨，  
風格清爽簡樸契合自然，一開窗，清新無塵的空氣便迎面而來，  
大自然形成的四季窗景，時時日日更換。  
蟲鳴鳥叫，星空點點，歡迎各國好友，大駕光臨.....

“Years pass as one leisurely walk on green grass,  
spend the night in the mountains, and view events of all types.”

There are only a limited number of leisure farms  
and lodging facilities located in leisure farming districts in Taiwan,  
numbering less than a hundred.

Though different in style, they are all rich in an atmosphere for leisure and vacationing.

Their buildings are not tall, but they offer wide-open views.

Rooms are typically spacious, clean, simple, and natural.

Just open the windows and let in clean, fresh air and natural,  
seasonal scenery that changes with each passing moment.

The sounds of nature insects singing and birds chirping and the starry skies are yours to enjoy.

We cordially welcome visitors and friends from all over the world.





# 台灣休閒農業發展協會

Taiwan Leisure Farms Development Association

台灣休閒農業發展協會係依據人民團體法設立之非營利組織。協會成立於西元1998年，以協助農業轉型發展休閒農業產業，建構樂活農村為目標，農場會員數近200家，歷經第一屆理事長飛牛牧場董事長施尚斌先生、第二、三屆理事長香格里拉休閒農場董事長張清來先生，第四、五屆理事長大坑休閒農場董事長蔡澄文先生，第六、七屆理事長龍雲農場董事長鄧雅元先生，第八、九屆理事長千戶傳奇生態農場董事長林典先生，第十屆理事長飛牛牧場總經理吳明哲先生的領導，在行政院農業委員會、學術界與業者的支持下，協會扮演學術界、政府與產業的橋樑，肩負休閒農業發展的使命。

協會秘書處為專業幕僚團隊，以提升服務品質、建構文化品味及塑造品牌價值為任務，推動『品質、品味、品牌』之三品運動，設置四大部門：

## ／ 行政事務部門 ／

負責行政協調、人力管理、財務管理與資訊管理，設立www.taiwanfarm.org.tw，作為休閒農業知識交流與經驗傳承的平台。

## ／ 人力發展部門 ／

負責建立學校與產業的產學合作，推動休閒農場經營管理師認證制度，設立產業學院辦理職能訓練，以培育經營管理人才。

## ／ 產業發展部門 ／

負責法令研修、發展策略研究、創新研發、產業輔導、推動休閒農場服務品質認證，建構穩定且高品質的休閒農業品牌。

## ／ 市場行銷部門 ／

負責多元化休閒農業商品開發，開發國際旅遊市場，以全球在地化的觀點來『建構台灣、行銷全球』。

協會在促進農業經濟發展的同時，也肩負社會教育與環境保護的責任，期使農村社會安定、農村永續發展，創造更大的社會價值。秘書處秉持著「七分做現在、三分做未來」的理念來推動業務，我們期望將台灣農業塑造成為適合旅遊、也適合居住的生活空間，讓我們擁抱這份為台灣農村努力的使命感，分享組織的知識，傳承幸福的力量，讓青年回鄉紮根、讓農民找回尊嚴，讓農村延續文化，讓大家都能夠『回農村享受休閒、來農場體驗幸福』。

The Taiwan Leisure Farms Development Association was founded in 1998 as a non-profit organization under the Civil Organizations Act. It aims to develop leisure agriculture and rural tourism in Taiwan and has nearly 200 member farms. It has also been supported by officers from the Council of Agriculture under the Executive Yuan, scholars, and other business owners. Our mission is to bring the academia, the government, and the industry together for a better future of leisure agriculture and rural tourism.

The TLFDA Secretariat is dedicated to helping our members provide high quality services, cultivate cultural charm, and establish brand images. To promote such "quality, taste and brand image," four divisions are set at the TLFDA:

### Administration :

This division is in charge of secretariat management. It is also the division that set up the www.taiwan-farm.org.tw website to promote the exchange and passing-down of insider knowledge.

### Human resource development :

The division's missions include setting up the Taiwan Leisure Agriculture Institute, promoting the Leisure Farm Manager Certification, and cultivating managerial talents for the industry.

### Industry development :

This division is responsible for studying related laws, promoting the Leisure Farm Service Rating System, and establishing a reliable, high-end industry image.

### Farm marketing :

The division is dedicated to the research and development of new products, attracting more international clients, and promoting tourism in Taiwan across the globe from a globalizing point of view.

In addition to boosting agricultural economy, the TLFDA sees itself as the promoter of public environmental education. It aims to bring social stability and sustainable agricultural development to rural areas as a way to give back to society. The TLFDA secretariat believes that "70% of the effort made for sustaining the present, and the other 30% is for creating a better future." By passing down old-time wisdom, sharing insider knowledge, and spreading the power of love, the TLFDA hopes to make agricultural villages in Taiwan wonderful tourist destinations and great living environments. Not only elder farmers can find their worth, youngsters can also come home to make a good living. In continuing the village culture, everyone can "enjoy a leisurely life while immersing in happiness."



# C O N T E

## 01 台灣農場分布圖

### 北 N O R T H

- 03 雪霸休閒農場 Sheipa Leisure Farm
- 05 卓也小屋 Zhuo Ye Cottage
- 07 山板樵休閒農場 San Ban Qiao Leisure Farm
- 09 花露休閒農場 Flower Home Leisure Farm
- 11 飛牛牧場 Flying Cow Ranch
- 13 山水居休閒農場 San Sui Ji Leisure Farm
- 15 菊園休閒農場 Ju Yuan Leisure Farm
- 17 好珈農莊 Hoka Farm

### 中 CENTRAL

- 19 台一生態休閒農場 Tai yi Ecological Leisure Farm
- 21 三茅屋民宿 Sun Maq Wu Host
- 23 熊麋鹿了幸福手作民宿 Bear meets moose B&B

# N T 南 S O U T H

- 25 龍雲農場 Long Yun Farm
- 27 走馬瀨農場 Tsou Ma Lai Farm
- 29 仙湖休閒農場 Fairy Lake Leisure Farm
- 31 大坑休閒農場 Dakeng Leisure Farm
- 33 福灣養生休閒農場 Fuwan Leisure Farm

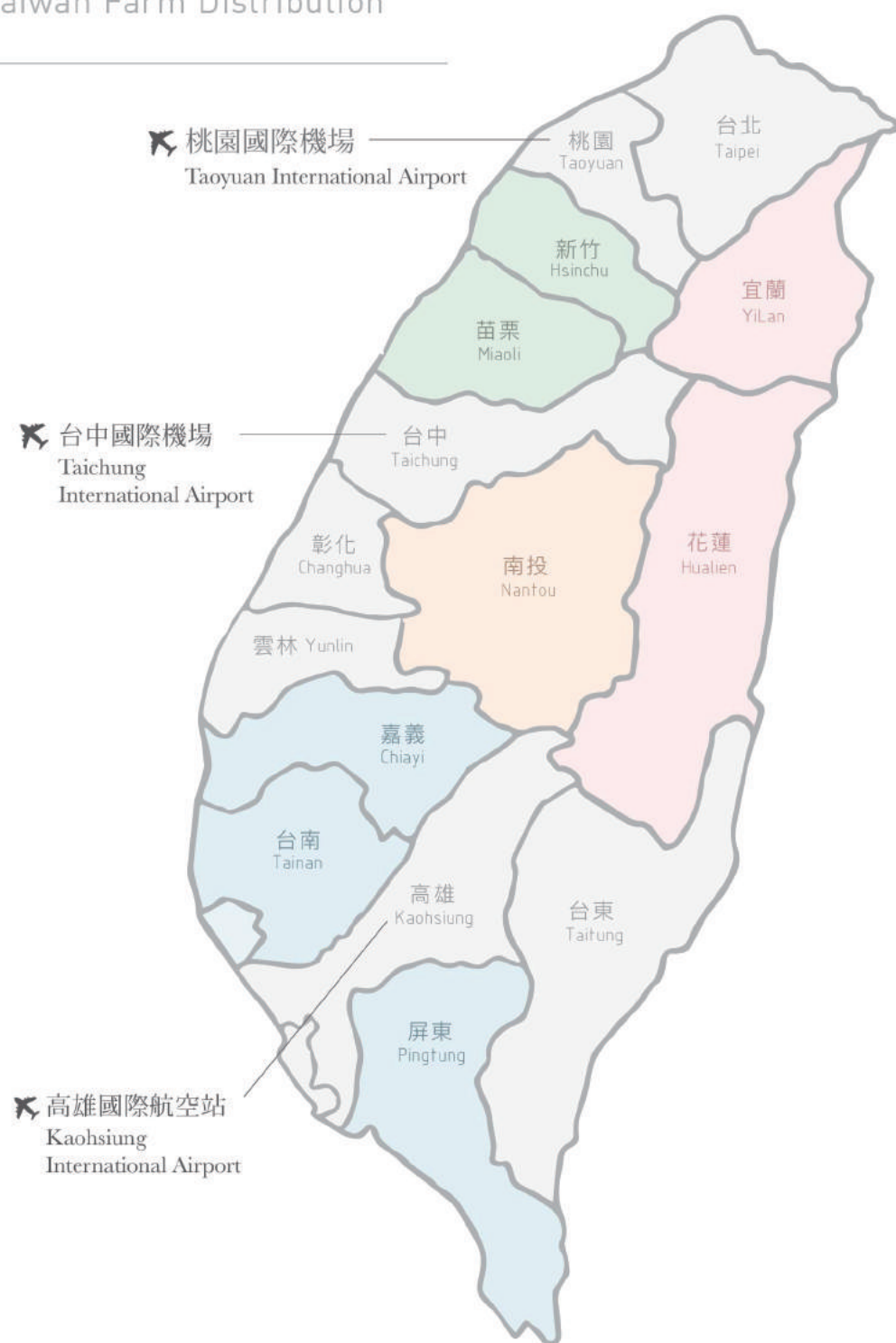
### 東 E A S T

- 35 八甲爵士莊園別墅 Ba jia knight manor b&b
- 37 三富休閒農場 Sanfu Leisure Farm
- 39 水岸森林休閒農場 River forest Leisure farm
- 41 東風有機休閒農場 Oriental Green
- 43 香格里拉休閒農場 Shangrila Leisure Farm
- 45 頭城休閒農場 Toucheng Leisure Farm
- 47 有朋會館 Yupeng-villa
- 49 亞維農民宿 Avignon B&B
- 51 欣綠農園 Shin-Liu Farm
- 53 新光兆豐休閒農場 Shin Kong Chao Feng Ranch



# 台灣農場分佈

Taiwan Farm Distribution



## 新竹 Hsinchu

雪霸休閒農場  
Sheipa Leisure Farm

## 苗栗 Miaoli

卓也小屋  
Zhuo Ye Cottage  
山板樵休閒農場  
San Ban Qiao Leisure Farm  
花露休閒農場  
Flower Home Leisure Farm  
飛牛牧場  
Flying Cow Ranch  
山水居休閒農場  
San Sui Ji Leisure Farm  
菊園休閒農場  
Ju Yuan Leisure Farm  
好咖農莊  
Hoka Farm

## 南投 Nantou

台一生態休閒農場  
Tai yi Ecological Leisure Farm  
三茅屋民宿  
Sun Maq Wu Host  
熊襲鹿了幸福手作民宿  
Bear meets moose B&B

## 屏東 Pingtung

福灣養生休閒農場  
Fuwan Leisure Farm

## 宜蘭 YiLan

八甲爵士莊園別墅  
Ba jia knight manor b&b  
三富休閒農場  
Sanfu Leisure Farm  
水岸森林休閒農場  
River forest Leisure farm  
東風有機休閒農場  
Oriental Green  
香格里拉休閒農場  
Shangrila Leisure Farm  
頭城休閒農場  
Toucheng Leisure Farm  
有朋會館  
Yupeng-villa  
亞維農民宿  
Avignon B&B

## 花蓮 Hualien

欣綠農園  
Shin-Liu Farm  
新光兆豐休閒農場  
Shin Kong Chao Feng Ranch

## 嘉義 Chiayi

龍雲農場  
Long Yun Farm

## 台南 Tainan

走馬瀨農場  
Tsou Ma Lai Farm  
仙湖休閒農場  
Fairy Lake Leisure Farm  
大坑休閒農場  
Dakeng Leisure Farm



# 雪霸休閒農場

SHEIPA LEISURE FARM



感受雲海環繞，遠眺雪霸聖稜線



雪霸休閒農場位於新竹五峰鄉，鄰近觀霧森林遊樂區，海拔1,923公尺，是前往清泉溫泉與雪霸國家公園最舒適、豪華的住宿選擇。在這裡可以遠眺著名的雪霸聖稜線，還可以在雲海環繞的戶外庭園喝咖啡，夜晚遼闊的天空與星光閃爍，讓人心情開朗！

In Wufeng Township, Hsinchu County, Sheipa Leisure Farm, at 1,923 meters above sea level, is located near Watch the Fog Forest Amusement Park. The farm is the most comfortable and luxurious accommodation choice for those who are heading for Qingchuan hot springs and Shei-Pa National Park. From this farm, the renowned Holy ridgeline is in sight in the distance. Our guests can drink coffee in our yard, surrounded by a sea of cloud. The stars shining brightly in the vast skies of the night makes people happy.



TEL / +886-3-5856192 / +886-3-5856193 FAX / +886-3-5857182

ADD / 新竹縣五峰鄉桃山村民石380-1號

No.380-1, Minshi, Wufeng Township, Hsinchu County

Web / [www.sheipa.com.tw](http://www.sheipa.com.tw)





# 山板樵休閒農場

SAN BAN QIAO LEISURE FARM



全國唯一以臉譜為主題的展覽館

山板樵休閒農場位於苗栗三義，為一木雕工作室轉型結合休閒產業的複合式農場，全國唯一以臉譜為主題的展覽館！『臉譜文化館』陳列一千多種不同樣式的臉譜展覽及多種DIY彩繪活動；『愛面子民宿』—森林小木屋，享受芬多精的優質民宿；『楓橋夜泊露營場』—寬敞的露營設備，絕對尊榮享受；『麒麟蛋生』—放牧健康養生優質蛋，食農教育遊程。

"San Ban Qiao Leisure Farm in Sanyo, Miaoli, is a multifaceted farm transformed from combining a sculpture workshop and a design for leisure. This is the only exhibition hall in the nation that features face painting. The Face Paintings Culture Hall has more than 1,000 face paintings on display and many DIY painting activities. Face-Loving B&B—cabins in the forest—offers quality living in the company of phytoncides. Maple Bridge campground is spacious that treats you exceedingly well. Qiji Eggs Laying offers a DIY farming experience on healthy egg raising."



TEL / +886-37-875766      FAX / +886-37-876037  
ADD / 苗栗縣三義鄉雙連潭138號  
No.138, Shuangliantan, Sanyi Township, Miaoli County  
Web / [www.sbch.com.tw](http://www.sbch.com.tw)





# 卓也小屋

ZHUO YE COTTAGE



山林中與世遺忘的桃花源



因為一隻貓頭鷹，我們在這裡駐足深耕了下來，宛若山林中與世遺忘的桃花源，是這裡映入眼簾的讚嘆，置身其中，更有彷彿重拾農家小境的溫情，桐花村裡桐花巷，遇見台灣最美的記憶；隱身在山林間的小村落，徜徉在綠蔭之間，錯落於小徑旁的屋子，有懷舊的穀倉住宿特色房間、在房間就可以溜滑梯的吉祥小屋，倚靠愜意山景的感恩及知足小屋...就是要你一整天都賴在這邊。

"Because of a night owl, we've stayed and worked here, a forgotten Shangri-la. You have to marvel what you see. You feel as if you were reliving the farm life in tung flower alleys in a tung flower village. You see the best of Taiwan. You are hidden in a small village in the mountain, or you're walking leisurely in a green shade. The cottage by the narrow path features guest rooms that reminisce old grain warehouses. The Good Fortunes cottages offer slides right in the room. The Grateful and Content cottages by the Xieyi mount are designed for you to stay inside all day long.

TEL / +886-37-879198 FAX / +886-37-879647  
ADD / 苗栗縣三義鄉雙潭村崩山下1-9號  
No.1-9, Bengshanxia, Sanyi Township, Miaoli County  
Web / [www.joye.com.tw](http://www.joye.com.tw)



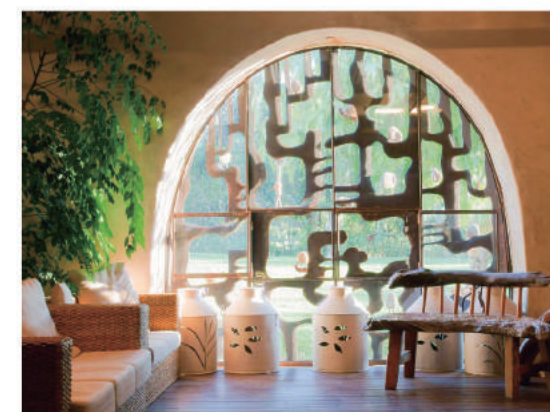


# 花露休閒農場

— FLOWER HOME LEISURE FARM —



淡淡精油花香陪您一夜好眠



花露農場係以花為主題著稱，園區除了繽紛花草及蔥鬱翠綠的樹木外，尚有香花草分佈其中，歷經30年不斷創新下，分別設立了以香為主題的產品：精油主題館(精油萃取DIY及精油足療體驗)；精油城堡(身心靈體驗香氛民宿)；香宴饗宴(花香、果香食農餐宴)，房間以天然木頭為建材，淡淡精油花香陪您一夜好眠。

Flower Home Leisure Farm has been known for featuring flowers. In addition to the flourishing flowers and green trees, fragrant flowers and grass show off themselves in their midst. With 30 years of unceasing innovation, we have established fragrance-based products: The essential oil hall (DIY to extract essential oil and essential oil foot massage experience), Essential oil castle (B&B to experience essential oil for the body, mind, and spirit), Essential oil dining (flower and fruit fragrances DIY dining). All guest rooms feature natural wood, where the light fragrance of flower essential oil accompanies you for a good night's sleep.

TEL / +886-4-25891589 / +886-4-25893280 FAX / +886-4-25897048

ADD / 苗栗縣卓蘭鎮西坪里43-3號

No.43-3, Xiping, Zhuolan Township, Miaoli County

Web / [www.flowerhome.com.tw](http://www.flowerhome.com.tw)





# 飛牛牧場

FLYING COW RANCH



全家大小歡樂的天堂

佔地120公頃，全園區有六大主題生態區、四大主題餐飲、濃厚的鄉村牧場住宿風格，提供全家大小歡樂的天堂、教育、休閒會議、歡樂DIY體驗園區及“動物農莊”，體驗幫牛媽媽擠牛奶、鴨BB大遊行及餵小牛喝ㄋㄟㄋㄟ...等深層的親子樂趣體驗活動。

On its 120 hectares, the farm features six ecological themes and four theme restaurants. The lodging, rich in country ranch living style, offers your whole family a happy haven that offers activities and experiences in education, leisure meetings, a happy DIY zone, and an “animal farm” where people can milk the cow, feed the calves, and watch ducks parade, and such in-depth experiences for children and parents.



TEL / +886-37-782999 FAX / +886-37-782399  
ADD / 苗栗縣通霄鎮南和里166號  
No.166, Nanhe, Tongxiao Township, Miaoli County  
Web / [www.flyingcow.com.tw](http://www.flyingcow.com.tw)





# 山水居休閒農場

SAN SUI JI LEISURE FARM



山水嬉人歲月長，摘星牧雲仙境居



「山水居」位於佛陀山入口處，位處彎路山凹視野遼闊，除登高遠眺群山環繞之外，也擁有天然的山泉聚集成池，山林泉水天然美景盡收眼前；山水居獨特的建築風貌，利用了山壁岩石、木材、紅磚塊，設計搭配出寬敞的空間有著樸實的厚重質感，和周遭山林環境融為一體，給人第一眼的印象極為深刻！真所謂是「山水嬉人歲月長·摘星牧雲仙境居」！

San Sui Ji Leisure Farm is located at the entrance to the Buddha Mountain. At a bend of the winding mountain path, the facility offers a panoramic view of surrounding mountains. The location also collects down-flowing spring water, affording magnificent views of springs and mountains. The unique architectural features of this facility take advantage of mountain boulders, wood, and red bricks to deliver spacious rooms that give the impression of being down to earth, heavy, and solid. It becomes part of the surrounding mountains and forests. This really gives an impressive first impression.



TEL / +886-37-951513 / +886-928-250191  
ADD / 苗栗縣大湖鄉栗林村佛陀山5-3號  
No. 5-3, Foshan Road, Dahu Township, Miaoli County  
Web / [www.sansui.idv.tw](http://www.sansui.idv.tw)



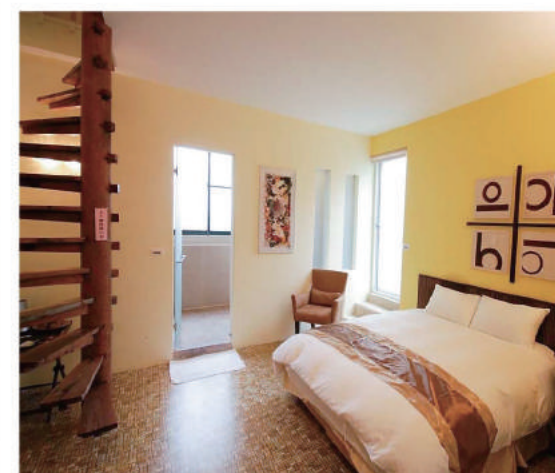
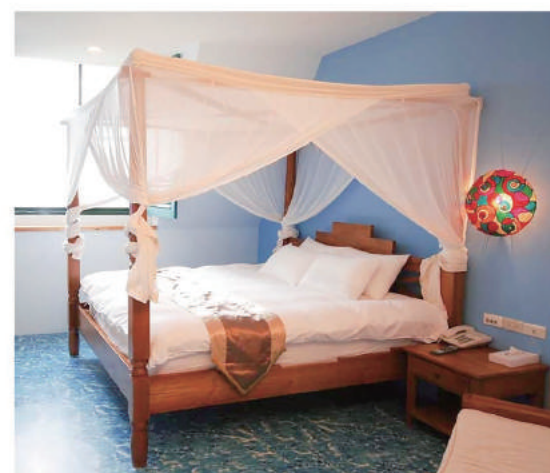


# 菊園休閒農場

JU YUAN LEISURE FARM



四季美好，通通盡收眼底！



菊園位於苗栗縣大湖鄉，海拔800公尺的山腰上，山景繚繞，四季分明，而我們的位置又剛好是在景觀最美麗的地方，清晨的日出，傍晚的彩霞，雲海、山楓，通通盡收眼底！

Ju Yuan Leisure Farm is located at 800 meters above sea level in a mountain in Dahu Township, Miaoli County. Surrounded by mountains, the farm features distinct seasons. Our location also affords the best view of the scenery, taking in the rising sun, the colorful clouds of at sunset, cloud sea, and mountain maples.

TEL / +886-37-951522 / +886-37-951765  
ADD / 苗栗縣大湖鄉栗林村九鄰薑麻園13號  
No.13, Jiangmayuan, Dahu Township, Miaoli County  
Web / [www.130.com.tw](http://www.130.com.tw)



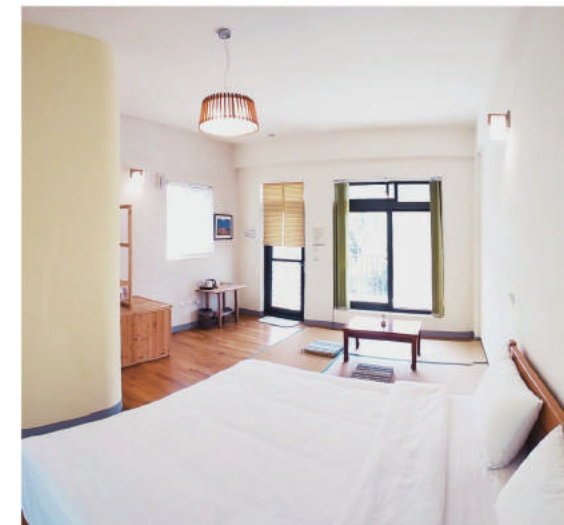


# 好珈農莊

HOKA FARM



在好珈農莊度過一個難忘的夜晚



"民宿主人為返鄉女青年及其日本夫婿，師承日本農家民宿精神，園區全區無毒無化肥，友善栽種咖啡與蔬果，適合親子農事體驗，落實食農教育與在地食材的理念分享。園區內不僅可以農事體驗、咖啡烘焙DIY、精油手工皂DIY，更可以與主人暢談如何好好生活、慢慢品味的慢活樂趣。"

The Hoka in Sanyi is an elegant guesthouse which combines traditional Japanese organic farming methods and Taiwanese hospitality, to bring you the best produce from our kitchen gardens directly to your plate, while making sure that you feel cared for throughout the duration of your stay.

TEL / +886-37-881766 FAX / +886-37-881586

ADD / 苗栗縣三義鄉龍騰村外庄62-6號

No.62-6, Longfeng, Sanyi Township, Miaoli County

Web / [www.facebook.com/hokataiwan](http://www.facebook.com/hokataiwan)





# 台一生態休閒農場

TAI-YI ECOLOGICAL LEISURE FARM

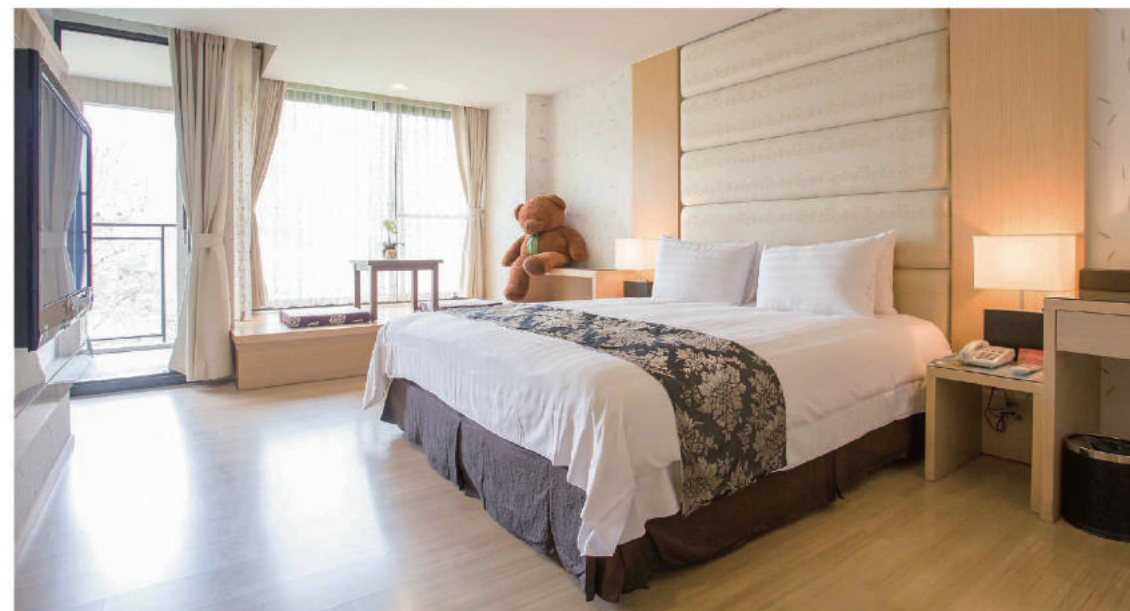


感受四季大地風情與變化萬千的自然風貌



座擁40000坪花園綠地，七大主題農場生態園區，感受四季大地風情與變化萬千的自然風貌，彷彿環抱在山巒浪漫的悠閒生活，時刻享受晨曦與晚景甯謐自在的輕旅行。客房內精緻花泉搭配萬千風景，讓人置身在香樹水岸的花園中，享受四季低調奢華的住宿氛圍！

With a 40000-ping garden and green landscape, the site features seven themes of farm ecology that offers ever-changing natural scenery through the seasons. You live leisurely in the midst of mountains and enjoy the serenity of the dawns and dusks. The flower spring in guest rooms and the ever-changing scenery make you feel as if you were on the Av. des Champs-Elysees living in low-key luxury of the seasons.



TEL / +886-49-2997848 FAX / +886-4-92900037  
ADD / 南投縣埔里鎮中山路一段176號  
No.176, Sec. 1, Zhongshan Rd., Puli Township, Nantou County  
Web / [www.taiifarm.com](http://www.taiifarm.com)





## 三茅屋民宿

SUN MAQ WU HOST



親切服務的笑聲，專業豐富的分享

香醇濃郁的早餐咖啡，親切服務的笑聲，專業豐富的分享，就在美麗的庭園中發生，主人為您提供愛心親子房、溫馨家庭房、幸福情侶房三種各具特色，您一定會喜歡這裡……。

Fragrant, rich morning coffee, the warm laughter of the servers, and the sharing of professionalism are all happening in the beautiful morning in the farm. The host offers adjoining parent-child rooms, rooms for families, and rooms for couples. We know that you will like it here.



TEL / +886-49-2912146 / +886-912-650805 FAX / +886-49-2917885

ADD / 南投縣埔里鎮桃米里桃米巷5-6號

No.5-6, Taomi Ln., Puli Township, Nantou County

Web / 3q.emmm.tw



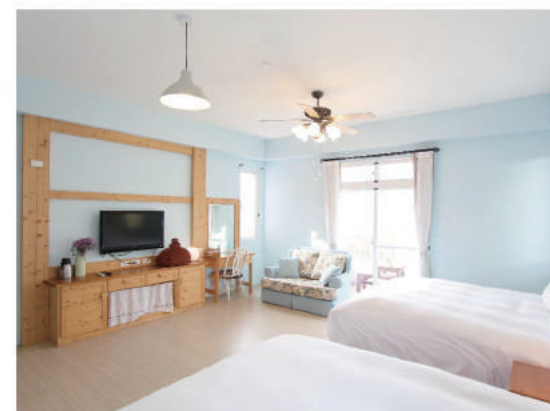


# 熊麋鹿了幸福手作民宿

— BEAR MEETS MOOSE B&B —



濃濃的日式雜貨風及獨特風格



由兩個男生打造出廣闊的休閒庭園及DIY幸福空間，每一間客房經過主人的巧手佈置有著濃濃的日式雜貨風及獨特的風格與特色；此外，您更不可錯過主人親手製作的早餐以及手工餅乾、甜點、果醬...等，深刻感受民宿主人的無比用心。

This big, leisure garden has been built up by two men. They have deftly decorated each guest room with a rich touch of a Japanese grocery store and unique style. Additionally, you don't want to miss the breakfast that the hosts make personally, handmade biscuits, desserts, and jams to really appreciate how much thought and care the hosts have put into their service.

TEL / +886-49-2919797

ADD / 南投縣埔里鎮桃米巷5-8號

No.5-8, Taomi Ln., Puli Township, Nantou County

Web / bear.okgo.tw





# 龍雲農場

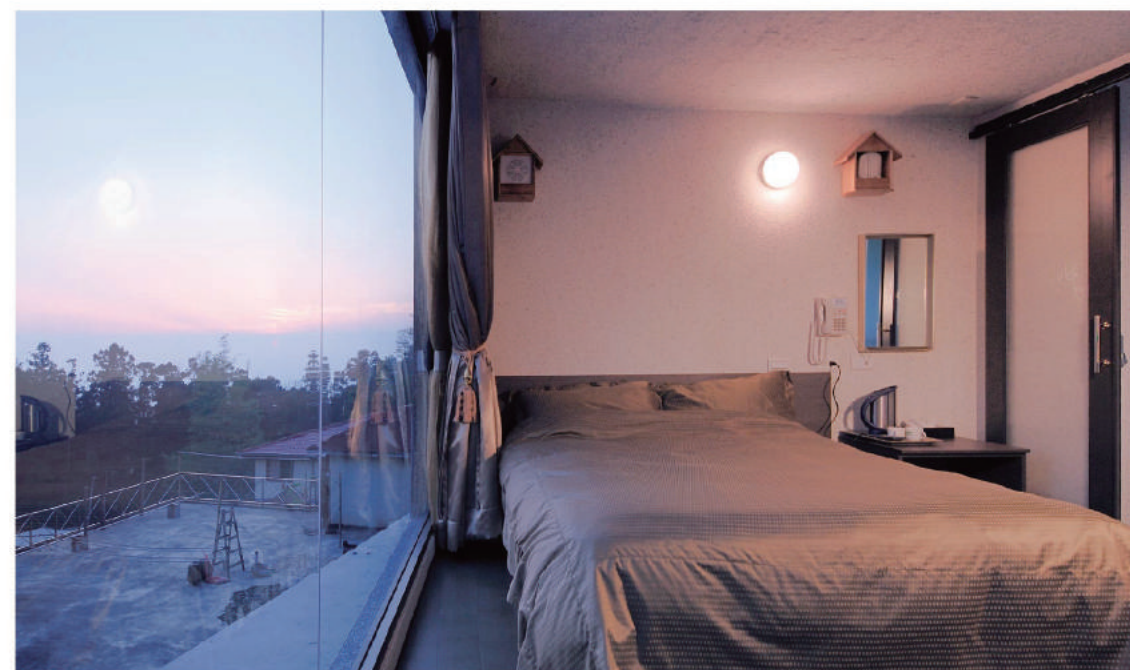
LONG YUN FARM



清晨輕柔的山嵐，滿滿芬多精的療癒

龍雲農場矗立在阿里山壯闊的山麓間，清晨輕柔的山嵐，讓人彷彿置身雲霧仙境中的錯覺，漫步在林間，景緻優美的步道，讓遊客的腳步不自覺的輕盈起來，空氣中滿滿的芬多精更是讓人身心得到最好的療癒！

Long Yun Farm stands tall in the midst of Alishan. The gentle clouds in the morning make people think as if they were in the realm of the gods. Walking on the path in the woods makes the tourists feel that their steps have become lighter. The abundant phytoncides in the air allow people to recover in their bodies and minds.



TEL / +886-5-2562216 FAX / +886-5-2562106

ADD / 嘉義縣竹崎鄉中和村石棹一號

No.1, Shizhuo, Zhuqi Township, Chiayi County

Web / [www.long-yun.com.tw](http://www.long-yun.com.tw)





# 仙湖休閒農場

FAIRY LAKE LEISURE FARM



享受山居歲月，感受被山擁抱的寧靜感



仙湖農場四季皆有農作生產，咖啡、荔枝、龍眼、柑橘.....堅信著「孕育我們的這片土地，及人們與之共存的方式，才是一切美好生活的基礎」。山頂座落著吧台、無邊際山泉戲水池及農村料理教室，綠草及果樹如茵，山風與白雲共舞。

Fairy Lake Leisure Farm never rests when it comes to growing crops. There are always plants growing, whatever the season, such as coffee, lychee, dragon eyes, and citrus. We uphold our conviction that a relationship in which man exists alongside the land that nourishes him is the foundation upon which happy living can be built. The bar on the top of the mountain, the play pool taking in a ceaseless inflow of mountain springs, the culinary classroom in the farm, the green grass, and the fruit trees, all this dances with the winds and the clouds.

TEL / +886-6-6863635 FAX / +886-6-6863662

ADD / 台南市東山區南勢里一鄰6-2號

No.6-2, Nanshizhuang, Dongshan Dist., Tainan City

Web / [www.senwho.com](http://www.senwho.com)





# 走馬瀨農場

TSOU-MA-LAI FARM



打開窗戶即能聽到大自然的交響樂



走馬瀨農場以種植牧草起家，廣植40公頃之盤固拉牧草，園區富有豐富生態、完善住宿設施、餐飲服務及遊憩設施。蘭花會館以蘭花為題，凸顯台南在地農業特色並且打造高品質住宿環境，歐式旅館提供舒適、乾淨且方便的旅宿環境，打開窗戶即能聽到大自然的交響樂，渡假木屋提供溫馨舒適且整潔之住宿環境，讓您享受農場悠閒步調。

Tsou Ma Lai Farm started out growing grass--40 hectares of pangolin grass. Our farm offers a rich ecology, fine lodging facilities, fine dining, and equipment for fun and leisure. The Orchid Hall focuses mainly on orchids. We accentuate the unique local quality of agriculture in Tainan, and we offer high-quality lodging. Our European style lodging environment brings you a comfortable, clean, and convenient place to stay. Just open the window, and the natural symphony orchestra is yours to savor. The cabins offer a warm, comfortable, and clean place to rest. This is a place for you to take leisurely walks.



TEL / +886-6-5760121 FAX / +886-6-5760282

ADD / 台南市大內區二溪里其子瓦60號

No.60, Qiziwa, Danei Dist., Tainan City

Web / [www.farm.com.tw](http://www.farm.com.tw)



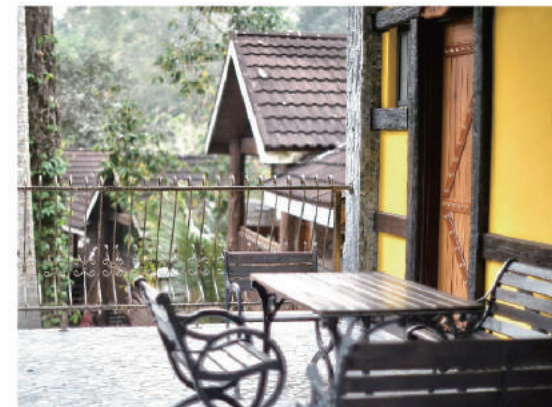


# 大坑休閒農場

DAKENG LEISURE FARM



透過食材旅行，感受農場質樸滋味



蔡家人三代同堂自給自足的歡樂農場，善於創作在地料理，透過食材旅行，感受農場質樸滋味，森林原木屋—整間原木打造的樹林小屋，宛如童話故事裡的小精靈住的房子；歐式別墅一館—歐式閣樓造型，每間房有獨立的陽台可與大自然最貼近；歐式別墅二館—歐洲小鎮風格，房間的無框落地窗讓您視線享受全屏山景。

The three generations of the Cai family runs a happy, self-sufficient farm. Through local ingredients, we offer you a journey of food ingredients so you may get a taste of farm simplicity. Virgin wood cabins in the forest are like cabins occupied by elves in the woods in fairy tales. European-styled villas I features lofts, each guest room having its own balcony for guests to be closest to nature. European-styled villas II resembles an old European town, each guestroom having a frameless window for guests to enjoy the full view of the mountain.

TEL / +886-6-5941555 FAX / +886-6-5940266

ADD / 台南市新化區大坑里82號

No.82, Dakengwei, Xinhua Dist., Tainan City

Web / [www.idakeng.com.tw](http://www.idakeng.com.tw)





# 福灣養生休閒農場

FUWAN LEISURE FARM



在這裡，遇到任何的事物都是美好豔遇



福灣以迴繞路徑區分各棟建築配置，運用多種原生樹種結合庭園設計，規劃出獨立的專屬庭院空間。每棟villa擁有獨特的空間形式，各具特色的空間趣味，藍天、豔陽、海灣、夕陽、魚塭是最基本款的親切風景，草地日光浴陪伴涼亭午茶，海風星空穹頂身心芳療，更是體驗福灣迷人的記憶。

Fuwan Leisure Farm uses the winding paths to distinguish its buildings. It uses native trees and landscaping to design the space for each villa building. Each villa has its own unique space design and its own characteristics, such as blue skies, a bright sun, a bay, a setting sun, or a fishery. These are the basic sceneries of the farm. Green grass and the sun accompany you as you sip afternoon tea in a booth. The ocean breeze and the starry skies enrich your memories of this place.

TEL / +886-8-8320111 FAX / +886-8-8322677  
ADD / 屏東縣東港鎮大鵬路100號  
No.100, Dapeng Rd., Donggang Township, Pingtung County  
Web / [www.fuwan.com.tw](http://www.fuwan.com.tw)





# 八甲爵士莊園

BAJIA KNIGHT MANOR B&B



到八甲一遊，絕對讓您不虛此行



到八甲魚場主題餐廳品嚐二億年前白堊紀出現的水中帝王鱈龍魚、魚中女皇香魚與各式精緻美食料理，在爵士莊園享受寧靜、清幽的住宿環境，到八甲一遊，絕對讓您不虛此行。

Come to the theme restaurant at Ba jia Leisure Fishfarm to have a taste of sturgeons, the king in the water, and ayus, the queen of fish, that first appeared during the Cretaceous and other fine dishes and enjoy the serene and quiet living environment at Knight Manor. Your visit to Ba jia Leisure Fishfarm will surely be well worth your time.



TEL / +886-911-225990 FAX / +886-3-9227222  
ADD / 宜蘭縣員山鄉深溝村員山路2段19號  
No.19, Sec. 2, Yuanshan Rd., Yuanshan Township, Yilan County  
Web / [www.8fish.com.tw](http://www.8fish.com.tw)





## 三富休閒農場

— SANFU LEISURE FARM —



與森林一起呼吸豐沛的自然能量



追求人與自然和諧的綜合型農場，提供休閒旅宿、健康餐飲、咖啡、烘焙、會議研習、自然/冒險/食農體驗等多元休閒服務，簡單雅致的風情，讓人沈浸在蟲鳴鳥語芬多精，與森林一起呼吸豐沛的自然能量。

This is a multifaceted farm seeking a harmonious relationship between man and nature. It offers leisurely lodging, healthy dining, coffee, bakery goods, conference rooms, and experiences in nature, adventure, and DIY farming. The farm offers a simple setting in which our guests can forget themselves in the sounds of nature and phytoncides and breathe in the abundant natural energy of the forest.



TEL / +886-3-9588690 FAX / +886-3-9588753

ADD / 宜蘭縣冬山鄉中山村新寮二路161巷82號

No.82, Ln. 161, Xinliao 2nd Rd., Dongshan Township, Yilan County

Web / [www.sanfufarm.com.tw](http://www.sanfufarm.com.tw)



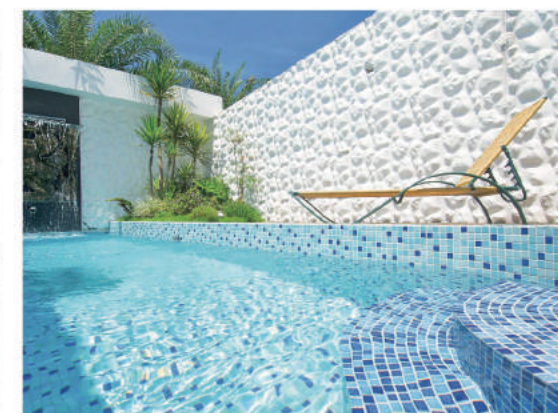


# 水岸森林休閒農場

RIVER FOREST LEISURE FARM



幸福如此簡單，休閒隨手可得



位於宜蘭柯林湧泉區，佔地約7公頃，農場運用大地賜予的珍貴資源，清澈冰涼的泉水，孕育豐富的自然生態。將農、漁生產串聯，以養殖、生態體驗為主結合在地食材運用，也是我們對這片土地的熱愛與堅持。

Located in the Kelin spring district in Yilan, the farm sits on seven hectares of land. It uses the precious resources that nature has so abundantly provided and the clear and cold springs to build up a rich, natural ecology. The farm links agricultural and fishing production. It offers experiences in cultivation and ecology. We use local ingredients in our cooking to show our love and insistence for this land.

TEL / +886-3-9610277 FAX / +886-3-9610255  
ADD / 宜蘭縣冬山鄉光華二路36號  
No.36, Guanghua 2nd Rd., Dongshan Township, Yilan County  
Web / [www.river-forest.com.tw](http://www.river-forest.com.tw)





# 東風有機休閒農場

— ORIENTAL GREEN —



一卡皮箱即刻體驗露營的美好



座落於冬山河上游山谷，主要栽植文旦及芳香植物，是一處充滿自然之美的生態體驗農場，在豐富的生態天然環境裡，免搭折帳，讓您一卡皮箱即刻體驗露營的美好！

Located in an upstream valley of Dongshan River, this farm grows mainly pomelos and plants of fragrance. It is an ecological experience farm that's rich in nature beauty. Just come with your luggage and experience the beauty of camping without the bother of pitching or taking down a tent.



TEL / +886-3-9587511      FAX / +886-3-9588564  
ADD / 宜蘭縣冬山鄉中山村中山路769號  
No.769, Zhongshan Rd., Dongshan Township, Yilan County  
Web / [www.a222.tw](http://www.a222.tw)





# 香格里拉休閒農場

— SHANGRILA LEISURE FARM —



回歸農村生活的恬靜簡樸



坐落於海拔二百五十公尺山麓上，年均氣溫約25度，氣候舒適、景色迷人，坐在園區內的盪鞦韆上，俯瞰平原景色、仰望星空銀河，體驗隨著四季變化的植物蔬果，使旅人回歸農村生活的恬靜簡樸，滿足都市人探索大自然的好奇慾望，探索蘊藏鄉野間的盎然趣味；以珍貴台灣檜木打造視野極佳景觀客房，值得您放慢腳步細細品味。

Located at 250 meters above sea level in the mountain with an average temperature of about 25 degrees Celsius for the year, the Farm enjoys a comfortable weather and charming scenic view. Sitting in a swing in the farm, you may look down for a view of the plain below or look up to stare into the galaxies above. Sampling the fruit and vegetables of the season, a traveler can really feel coming home to the simplicity of farm living, satisfy his or her curiosity and desire for natural exploration, and explore the fun hidden in the countryside. Built with Formosan cypress to work spruce, our guest rooms offer excellent views to take all in slowly.

TEL / +886-3-9511456      FAX / +886-3-9515222  
ADD / 宜蘭縣冬山鄉大進村梅山路168號  
No.168, Meishan Rd., Dongshan Township, Yilan County  
Web / [www.shangrilas.com.tw/shangrila/](http://www.shangrilas.com.tw/shangrila/)





# 頭城休閒農場

TOUCHENG LEISURE FARM



多樣性自然景觀及豐富的生態資源



多樣性自然景觀及豐富的生態資源，設有舒適客房、會議室、餐廳、戶外教室、有機桂竹林及蔬菜園區、果園區，亦是環境教育設施場所，農場的食農及探索教育課程、無痕山林教育更廣受歡迎。另有藏酒酒莊時尚清新的山林咖啡餐廳，品嚐別出心裁的創意莊園美食。

We are equipped with diverse natural scenery and rich ecological resources, comfortable guest rooms, conference rooms, dining facilities, outdoor classrooms, clusters of organic bamboo plants, and vegetable gardens, which double as environmental education venues. Our courses on DIY farming, exploration, and leave no trace behind in the mountains are widely popular. Our winery and cafe in the mountain are places for you to enjoy our farm cooking.

TEL / +886-3-9772222 FAX / +886-3-9778688  
ADD / 宜蘭縣頭城鎮更新路125-1號  
No.125-1, Gengxin Rd., Toucheng Township, Yilan County  
Web / [www.tcfarm.com.tw](http://www.tcfarm.com.tw)





# 有朋會館

— YUPENG-VILLA —



好的空間是最值得沉靜的饗宴



還原建築材料本質，試著用掌心觸碰著水泥粗糙的肌理，看著建築與光影的交互變化，建築群就如同自然的雕塑在山景田野的輝映下，閃閃發光。好的空間是最值得沉靜的饗宴，以當代清水模建築為基礎，置入藝術、文化與人對居室的期待，回歸自然、質樸的態度，規畫出不同的客房空間，期待與您分享這生活的美好。

Returning to the essence of building and trying to touch the rough texture of concrete, you experience the interaction between buildings and the light. Buildings, like sculptures, glitter in the mountain and the field. Good space is in itself a treat worthy of your settling down to appreciate. On the basis of fair-faced concrete, our buildings incorporate art, culture, man's long for indoor living, desires to return to nature, and a simple attitude. With all this in mind, we've devised various guestrooms to share the beauty of such living with our guests.

TEL / +886-3-9220172 FAX / +886-3-9227581

ADD / 宜蘭縣礁溪鄉二結村二結路36-11號

No.36-11, Erjie Rd., Jiaoxi Township, Yilan County

Web / [www.yupeng-villa.com](http://www.yupeng-villa.com)





# 亞維農民宿

— AVIGNON B & B —



彷彿來到梵谷所愛的南法山城



位於員山鄉大礁溪，浪漫鄉村風格、濃烈綠色山林、小橋流水，還有可以沉思的發呆亭，當夜晚來臨時，有滿天的星斗陪著你。橘黃色建築的印象色彩，彷彿來到梵谷所愛的南法山城，以花草及畫家來設計的房間，各具特色，別有一番風味。

Located in Dajiaoxi of Yuanshan Township, this facility is rich in rustic romance, thick, green mountains, bridges and streams, and booths in which you may ponder or do nothing. Countless stars accompany you at night. The orange-yellow buildings are rich in impressionist colors, making you feel that you are visiting the mountain cities in southern France that van Gogh loved. Our guest rooms were designed with plants by painters, with uniqueness in each room.

TEL / +886-978-903869

ADD / 宜蘭縣員山鄉枕山村坡城路16-16號

No.16-16, Pocheng Rd., Yuanshan Township, Yilan County

Web / ilanavignon.com





# 欣綠農園

SHIN-LIU FARM



像寶藏般豐富的濕地生態



欣綠農園位於花東縱谷馬太鞍休閒農業區，除推廣生態小旅行、食農教育外，更結合社區，讓遊客體驗阿美族獨特捕魚方式「拉告」，呈現在地生活智慧，讓遊客能悠遊農村文化、享受美食、探索自然，欣綠石頭屋以數萬顆頁岩砌成，戶外溼地美景映入眼簾，清晨有天籟鳥鳴自然鬧鐘，歡迎來享受自然溫暖的搖籃。

Shin-Liu Farm is located in the Mataram leisure farming district in Hualien Taitung Vertical Rift. We promote ecological mini trips, DIY farming, and, in conjunction with communities around here, experiences on the unique way of catching fish--Lagan--of the Amis people as a way to show the wisdom of the local tribe. Our farm offers our guests opportunities to experience farm culture, fine dining, and natural exploration. Our stone houses, built with tens of thousands of shale pieces, affords views on the wetland outside. In this place, the sound of nature is the alarm clock that awakens you from the warm bed in the midst of nature.

TEL / +886-3-8701861 FAX / +886-3-8705819  
ADD / 花蓮縣光復鄉大全村大全街60號  
No.60, Daquan St., Guangfu Township, Hualien County  
Web / [www.shin-liu.com.tw](http://www.shin-liu.com.tw)





# 新光兆豐休閒農場

SHIN KONG CHAO FENG RANCH



放慢腳步，發現大自然無窮樂趣

農場有鳥園、動物園、花卉區以及乳牛區，提供牛奶、冰淇淋等美食，還可以體驗餵小牛等活動；農場內的溫泉有“美容湯”的美譽，可滋養肌膚，促進循環，在這裡可以親近自然，享受簡單的生活。

The farm has a bird house, a zoo, a flower garden, and a cow area that offers milk, ice cream, and other tasty food as well as opportunities to feed the calves. The hot spring in the farm is fondly referred to as “the spring of beauty”, that nourishes the skin and muscles and helps with circulation. You get close to nature and live a simple life here.



TEL / +886-3-8772666      FAX / +886-3-8771556  
ADD / 花蓮縣鳳林鎮林榮里永福街20號  
No.20, Yongfu St., Fenglin Township, Hualien County  
Web / [www.skcf.com.tw](http://www.skcf.com.tw)





# 農 居

FARM STAY

指導單位 /  行政院農業委員會

發行單位 /  台灣休閒農業發展協會

發行人 / 游文宏

總編輯 / 邱翔羚

執行編輯 / 林瑞揚

企劃 / 林瑞揚

設計印刷 / 橙米創意設計有限公司

發行 / 台灣休閒農業發展協會

地址：宜蘭市陽明二路23巷2號3樓

電話：+886-3-9381269

傳真：+886-3-9382610

2018年11月初版

版權所有・翻印必究

廣 告